



# BlueSeries WEB-client...

## ... the company document portal on the net

### Organize all types of documents

*The Web-client collects and organizes the company documents in a well arranged hierarchic structure. The structure is set up individually and can reflect the work routines within the company.*

The Web-client can open the document portal on the internal network or on the Internet for employees, customers, suppliers and other cooperating partners.

The documents are categorized using origin such as transmissions, printouts and documents.

#### Transmissions

Incoming and outgoing transmissions of correspondence such as printouts, documents, files and messages is monitored in a central log. Transmissions can be send and received by BlueSeries via Fax, Mail, FTP and SMS. In the basis setup, the log is split in own and other transmissions – and below that in direction and status.

BlueSeries follows the transmission carefully from the moment it is queued, until it is communicated and either ended normally or interrupted because of an error. BlueSeries will automatically try to re-transmit when an error occur using predefined rules. Incoming transmissions is also stated in the log – as received normally or received with errors.

It is simple for the user to hold, delete or retransmit documents. Via the hierarch structure, the administrator has a full overview of the situation, and can easily identify disconnected transmissions for all users.

The Web-client can, using an included component<sup>1)</sup>, send fax and mail from all Windows-programs.

The contents of a transmission can be displayed graphic – and the properties of the transmissions appear from the columns. The content of the transmissions and the log is saved in an optional number of days. If the contents is kept for a longer period of time, is should be moved to the document part of the portal. This process can be automated so that transmissions with specific characteristics are saved as documents in the hierarchic structure.

Incoming transmissions can be forwarded as e-mail to both internal and external recipients – possibly with a comment.

#### Print

In the same way all print from the AS/400- and iSeries-system can be organized according to company requirements. In the basis setup the user can only view own print - sorted using status such as ready, on hold, saved or printing.

While print on the AS/400 and iSeries is split in print queues, the web-client can organize the print according to properties, thus better reflect the daily routines.

The structure is build dynamic, which means that the print automatically disappears, once it is printed or deleted. It is possible to refer to the same print from several places within the structure. This way the print can be found via more than one approach.

Print can be send as fax and e-mail or be opened for further processing using a text editor program<sup>1)</sup>.

The user can hold, release and even move print between print queues. If print is kept for a longer period of time, is should be moved to the document part of the portal.

#### Documents

All types of documents can be organized in the document part. The physical location of the documents is not of vital importance for the structure, as this is build via logic links to the documents.

This technique makes it possible to refer to the same document from more than one place within the structure, and being able to place the documents on other servers.

The logic links can refer to information and documents on the Internet – and in that way organize a knowledge portal for the users.

Functions within BlueSeries and programs developed in IceBreak can also be included in the structure via logic links. This way, one click can start an online session or commence a process runni9ng in the background.

A logic link can also refer to a certain level within the structure which is used often - by which the logic link will function as a shortcut.

Documents can be reorganized using drag and drop within the structure. If a document is dropped over a function or program, this function will assume the further execution<sup>1)</sup>.

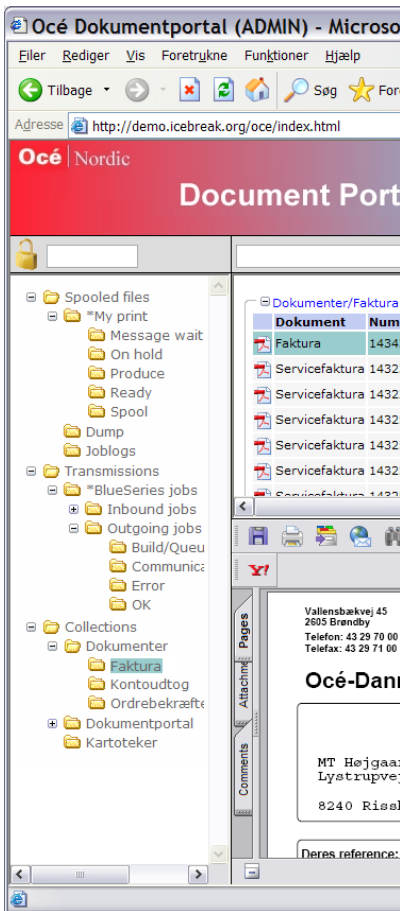
The basis setup includes the hierarchic structure and functions to send print as fax or mail using drag and drop<sup>1)</sup>. This method can also be used to move print between print queues<sup>1)</sup>.

Transmissions and print is save physically under the document part<sup>1)</sup> - while other documents can be placed individually.

When new documents are assigned to the structure the user choose whether the document is physically saved or whether it is referred to via a link. Further the user need to enter search keys as required for the concerned structure level.

<sup>1)</sup> Released in second quarter 2007





### Organizing

When installed the dokument portal is organized using the above three categories. If required, this structure can be changed to reflect specific procedures.

### Framework

The Web-client can also be delivered as an open Framework, where further functions can be added and the layout changed to reflect existing internet pages.

This Framework can be further expanded with IceBreak Enterprise to run under IceBreak Server.

### Individualizing

An optional icon can be applied to each level in the hierarchic structure, by which retrieval of documents become faster and more intuitive.

### Properties

The source of the document influence on its properties – hence it is possible to resend a transmission or reestablish a print by a click on the mouse.

Search keys are also a part of the documents properties. These are shown in columns next to the individual document. A search key can also be converted to an icon, using a table - and e.g. as a flag visualize the document status.

### Flexible search – provides fast access

Known information about the required document is entered in a field, and the present level in the structure and all underlying levers are searched for matching information. As the search function uses same technique and syntax as the search engines on the Internet, the required document is found in a selection of matching documents.

### Advanced search - can find the required document

When qualifying the search words pr. column on the specified level within the structure, the search engine will be able to find the requested document with great precision.

### Personal design

Sorting on columns gives a more personal presentation - and opens the possibility for faster retrieval of documents with common information. The individual user decides which columns are displayed and also the order of the columns<sup>1)</sup>.

### Access Control

The build-in authorization system controls the publishing of the documents via a sensitive filter. The client only presents the specific part of the structure and the documents, which the user or user group in question have access to.

For instance the authorization system can distinguish between three types of users - anonymous users, web-profile users and iSeries users.

Anonymous users will often be able to view a very limited part of the structure – e.g. product catalogues and public documents. Web-profile users will be able to view own documents – while iSeries users will be able to work with transmissions, print and documents.

The basis setup predefined authorization system can be expanded within the Framework to include more customer specific scopes - which can be used for look-up in the customers databases.

### Events

At all levels in the Framework can be assigned one or more events, by which processes and work routines can be activated using the web-client. For example a double click can open a PDF-file and at the same time change the search key "status" from "received" to "read". Further the search key can visualize this change by switching the icon from a closed envelope to an open envelope.

Events can also be activated by placing the mouse over the involved document - by which a small menu displays various options e.g. the event "Approved" could change the search key "Status" and under the search key "Invoice" mark the document as approved.

### Organizes PDF-documents from InterForm

Using an included API program, the Web-client can receive and organize PDF-documents from InterForm.

In one process InterForm extract search keys from the print and generates the PDF-document including the overlay for delivery on the document portal.

**The Web-client is developed for Microsoft Windows Internet Explorer, and no guarantee for other Internet Browsers can be provided.**

### The BlueSeries product line ...

BlueSeries is the optimal solution when you want to distribute your iSeries spool print as e-mail, fax or XML documents.

#### Fax

Send/Receive Fax .

#### Mail/FTP

Send/Receive email from BlueSeries. All types of data can be sent as attachments.

#### IceBreak

IceBreak enables you to build web applications on the IBM iSeries (AS/400) server platform and to reuse your RPG coding skills and legacy code.

#### eXpress'it

A package consisting of BlueSeries Base, Fax, Mail/FTP, XML and 10 PC-Clients.

#### SMS

SMS Communicator integrates SMS to the company communication flow. SMS Monitor enables you to monitor every movement and process on your iSeries.

#### XML

All types of Spooled data can be converted into XML format. Inbound XML can be converted into a spooled

